

# **SENAI in Paraná Center for Sustainable Solutions: increasing ESD awareness through sustainable construction and technologies**

# SENAI IN PARANÁ

- RCE - Curitiba - Paraná
- Brazil, South America
- SENAI in Paraná (National Service of Industrial Apprenticeship in Paraná)
- Our role is to provide professional and technical education and industrial technological innovation
- Sustainability - commitment of our Regional Director
- RCE - Curitiba - Paraná Partners - institutions: UFPR, UTFPR, PUC-PR, Senai in Paraná



# RCE PROJECT

- **SENAI in Paraná Center for Sustainable Solutions: increasing ESD awareness through sustainable construction and technologies**
- **Thematic areas: Sustainable consumption and learning & Youth**
- **Focus on: Capacity development; Community engagement; Material development; Networking; Policy engagement**
- **September 2013 - SENAI in Paraná launched the SENAI Center for Sustainable Solutions - 159.20 m2**
- **created to promote new technologies applied to sustainable construction, energy and environment.... but afterwards much more...**
- **Space for discussions and activities related to ESD (students, community, enterprises and industries, video, educational texts and more)**

## **PARTNERS**

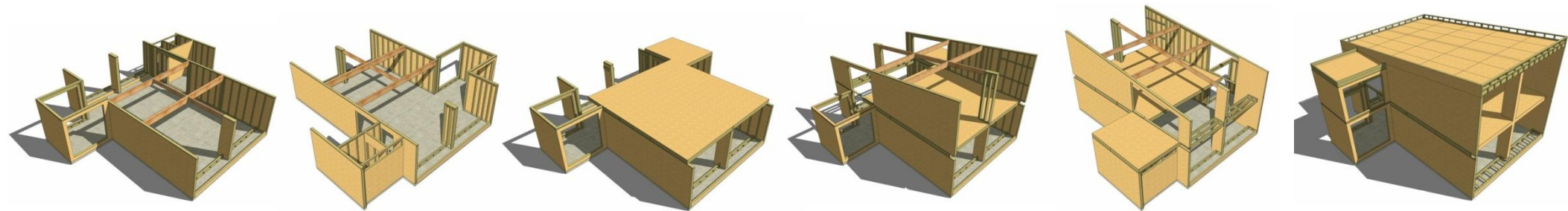
- **TECVERDE** - responsible for the wood frame sustainable constructive system, which reduced the environment impact during the project implementation;
- **MADEPLAST** - manufacturer of the environmentally friendly deck, made of ecological wood (composite of wood residues and recycled plastic)
- **PHOTOVOLTAIC ENERGY** - is the energy obtained by direct conversion of light into electricity through the photovoltaic effect;
- **FORPLAS** - stairs manufacturing using eucalyptus reforested wood;
- **PLACLUX** - manufacturer of cement slabs used for external coating;
- **ECOTELHADOS & STUDIO ARQBOX** - green roof supplier (grass and assembly of green roof system) and sustainable architecture, including natural ventilation and lighting;

## **PARTNERS**

- **SCHNEIDER ELECTRICS & QUALITÁ ACABAMENTOS** - intelligent management system of the Center's environment, such as air-conditioning, lighting, communications, security and energy, all controlled at any time and from anywhere;
- **VOVENDIS ECO-CONSULTING & DEVELOPMENT** - oil treatment for preserving and providing final finish to girders and beams;
- **PORTAS J.ANTUNES** - doors manufacturing using eucalyptus reforested wood;
- **FORBO** - ecological floors;
- **SENAI + DESIGN** - internal environment, comprising design and development of the working stations and panels;
- **STATE MINISTRY FOR FINANCE AND ECONOMIC AFFAIRS OF BADEN-WÜRTTEMBERG** - assistance in transferring the wood frame technology to Brazil and search for other partners.

# SENAI IN PARANÁ CENTER FOR SUSTAINABLE SOLUTIONS

- Wood frame construction system

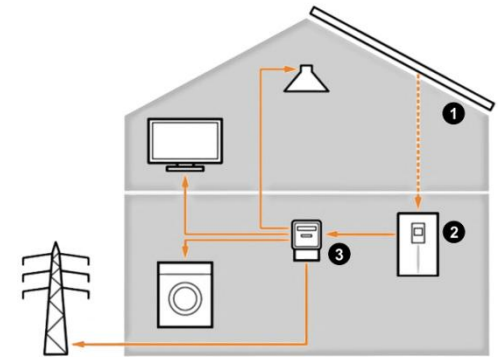


Virtual Tour: <http://www.senaipr.org.br/nucleo-de-sustentabilidade/>



# SENAI IN PARANÁ CENTER FOR SUSTAINABLE SOLUTIONS

- photovoltaic panels providing energy



- alternative sustainable materials - e.g. plastic wood



# SOME RCE MEETINGS AND ACTIVITIES

- RCE - Curitiba - Paraná - Participation on the 2013 Grand Rapids RCE Virtual Youth Conference of the UNU RCEs: A Regional Perspective on Water and Sustainability (May 2013)





# SOME RCE MEETINGS AND ACTIVITIES

- RCE - Curitiba - Paraná - Launching of the CRIE 3 magazine (April, 2014)



# SOME OTHER MEETINGS

- PRME Chapter Brazil Meeting (May, 2014)



# **EDUCATION FOR SUSTAINABLE DEVELOPMENT.....**

**..... is our commitment!**

**SENAI in Paraná  
SUSTAINABILITY TEAM**

**THANK YOU!**

**ALSO SPECIAL THANKS TO:  
RCE PARTNERS - CURITIBA - PARANÁ - BRAZIL  
RCE - AMERICAS  
UNU - IAS**

**COMING UP NEXT FEBRUARY  
International Students Conference on Urban Sustainability  
(ISCUS), details at:**

**<http://www.unilivre.org.br/iscus/>**

**(students abstracts deadline: Nov. 25th, 2014)**